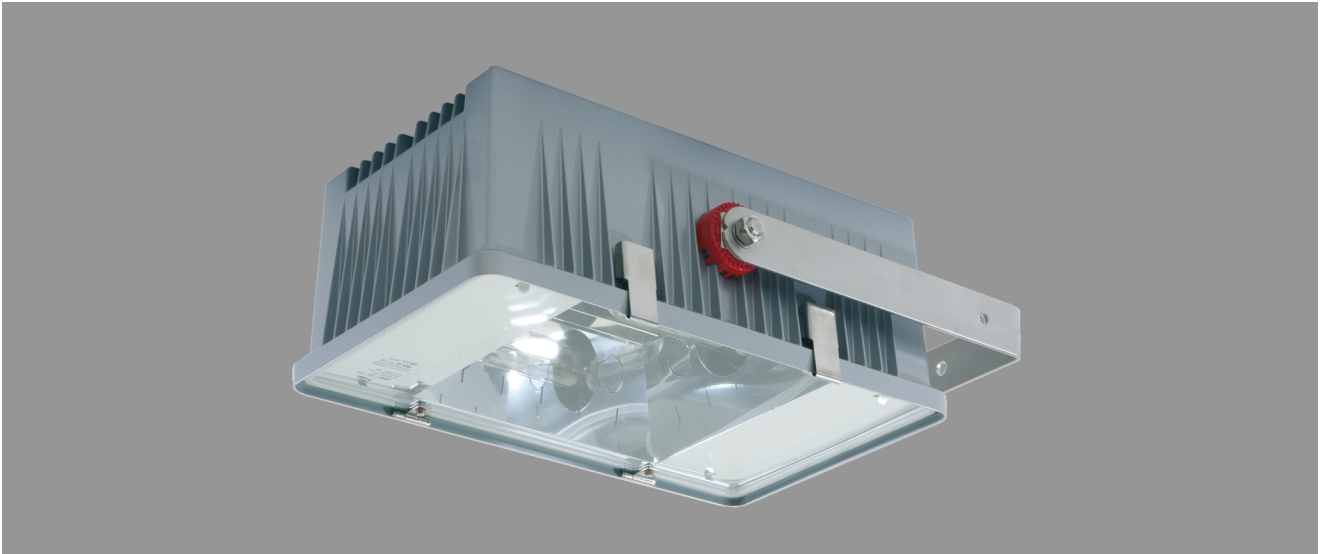


## POLLUX, ASYMETRICAL BEAM (LONGITUDINAL)



POLLUX, asymmetric beam (lengthwise), inductive; HST-DE 250W

Solid die-cast aluminium housing with satined surface.

Frameless hinged safety glass cover.

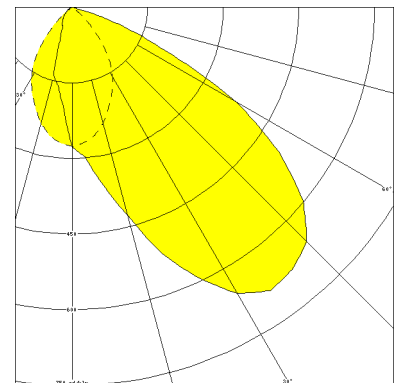
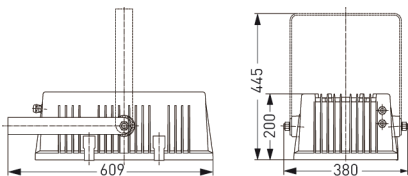
Internal aluminium reflector asymmetric beam (lengthwise).

For lamps HST-DE 250W. IP 65, protection class I.

Ballast with thermal switch and ignitor with automatic shutoff integrated.

Two cable glands M20. Mounting via two mounting bolts M10.

Article number: 985 814



### MASSE

Länge (mm)	Breite (mm)	Höhe (mm)	a-Mass (mm)
318	528	200	430

### LIGHT OUTPUT RATIO

LOR (%)
62.53