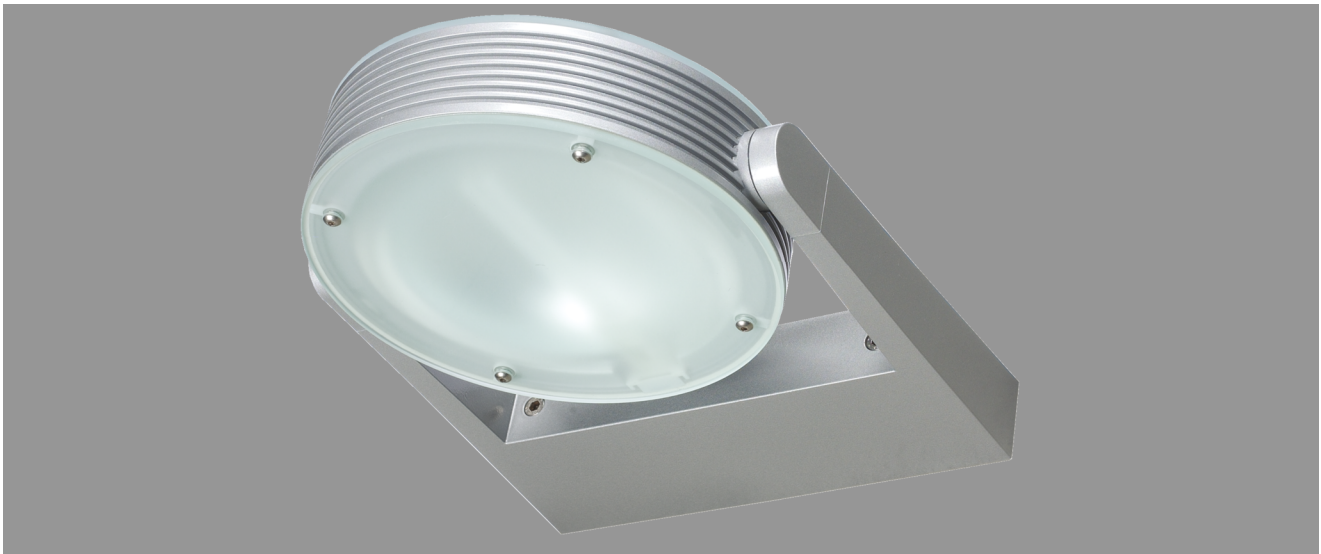


## NEW YORK, DIRECT / INDIRECT



NEW YORK, direct / indirect

Aluminium multi purpose luminaire

IP 54, protection class II

Aluminium housing, Ø 245 mm, in silver colour finish (RAL 9006), with frameless and satined cover glasses.

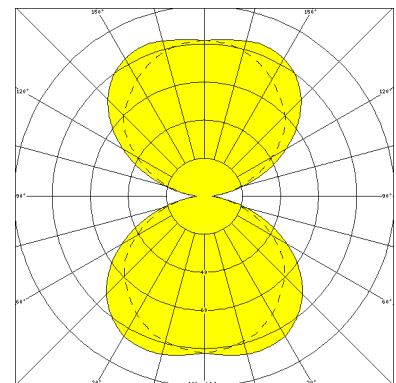
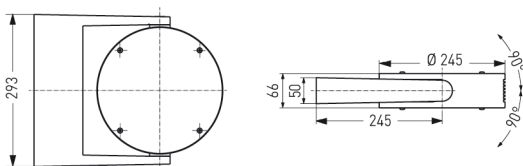
Four stainless steel allen screws per side. Continuously adjustable 90° and lockable.

Luminaire in version direct/indirect. For compact fluorescent lamps 26W.

Wall bracket made of thermoplastic resin, fibre-glass reinforced, with ballast compartment for electronic ballast and connecting terminal.

Mounting via two M8 screws.

Article number: 301 227



### MASSE

Länge (mm)	Breite (mm)	Höhe (mm)	a-Mass (mm)
293	367	66	255

### LIGHT OUTPUT RATIO

LOR (%)
57.72