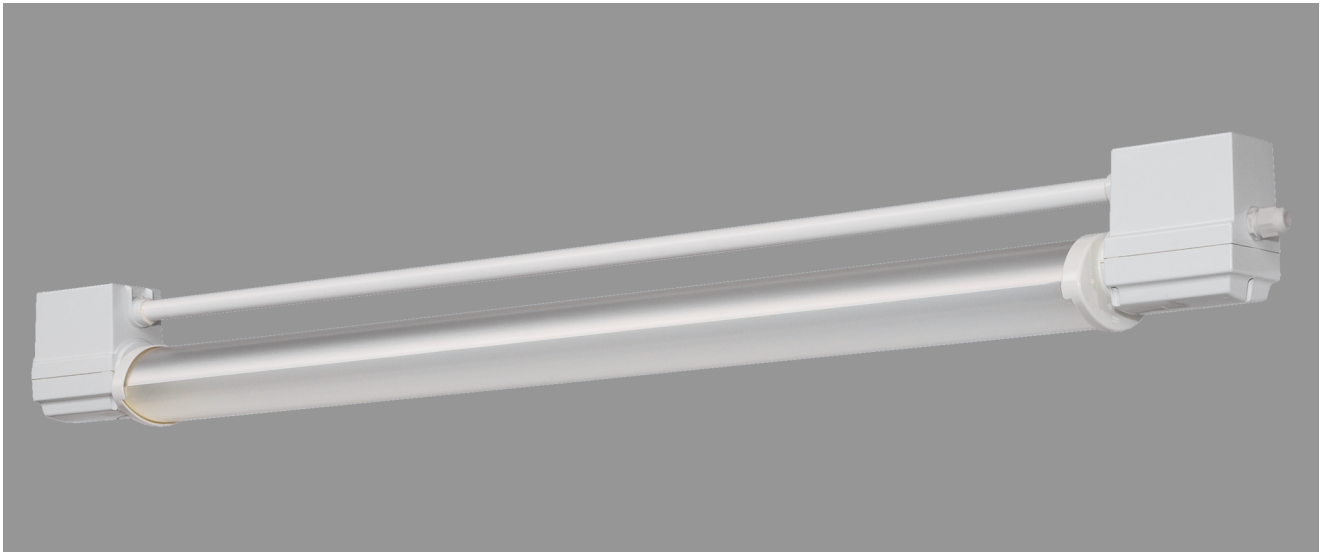


# BEBRA, REFLECTOR TUBE PMMA TRANSOPAL (IMPACT STRENGTHENED), REFLECTOR TURNED BY 180°



BEBRA with reflector tube PMMA transopal (impact strengthened), reflector turned by 180°, compensated; T8/36W

Luminaire made of phenolic resin, IP 68, 1m, protection class II.

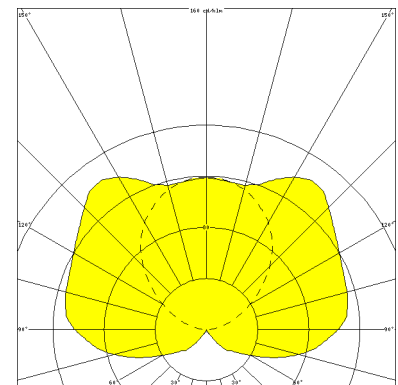
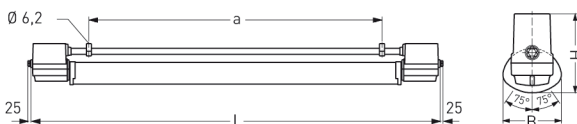
With reflector tube PMMA transopal impact strengthened, adjustable and lockable, with mirrorfinish, internal reflector turned by 180°.

Built-in low loss ballast and starter.

Ready for connection with 2 cable glands M20, through-wiring 2 x 1,5 mm<sup>2</sup>.

Reinforced polymere clamps for mounting, variable mounting distance.

Article number: 530 410 01 - 201 854



MASSE			
Länge (mm)	Breite (mm)	Höhe (mm)	a-Mass (mm)
1392	107	142	1005

LIGHT OUTPUT RATIO
LOR (%)
70.52