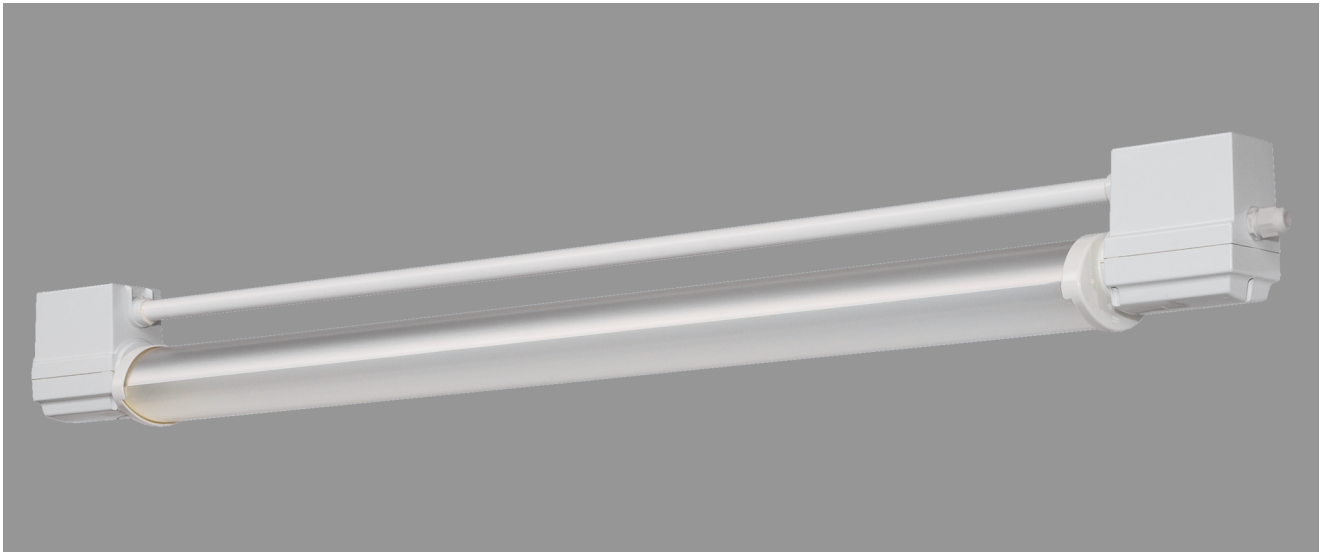


BEBRA, REFLECTOR TUBE PMMA TRANSOPAL (IMPACT STRENGTHENED), REFLECTOR TURNED BY 180°



BEBRA with reflector tube PMMA transopal (impact strengthened), reflector turned by 180°, inductive; T8/18W

Luminaire made of phenolic resin, IP 68, 1m, protection class II.

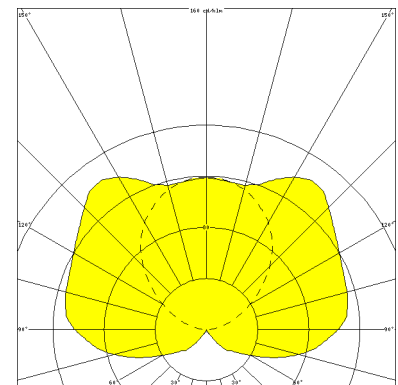
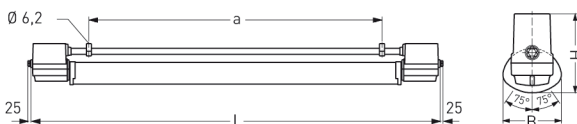
With reflector tube PMMA transopal impact strengthened, adjustable and lockable, with mirrorfinish, internal reflector turned by 180°.

Built-in low loss ballast and starter.

Ready for connection with 2 cable glands M20, through-wiring 2 x 1,5 mm².

Reinforced polymere clamps for mounting, variable mounting distance.

Article number: 530 210 01 - 201 852



MASSE

| Länge (mm) | Breite (mm) | Höhe (mm) | a-Mass (mm) |
|------------|-------------|-----------|-------------|
| 782 | 107 | 142 | 395 |

LIGHT OUTPUT RATIO

| LOR (%) |
|---------|
| 70.52 |